

Greenridge Cres between Saanich Rd and Quadra St

February 25, 2020 To February 27, 2020



The data presented here is for information purposes only and should not be considered authoritative for construction, geotechnical, engineering, navigational, legal, or other site-specific uses. The information shared is owned by the Transportation Division of the Engineering Department at the District of Saanich. Accuracy is not guaranteed.

Start Date: 24-Feb-20
 Start Time: 0:14
 Station ID: R0473-01

Location 1: Greenridge Cres between Saanich Rd and Quadra St

Note:

DATE:	February 24, 2020		February 25, 2020		February 26, 2020		February 27, 2020		February 28, 2020		WK AVG		WK AVG	HOURLY
	MON		TUE		WED		THURS		FRI				CH 1+2	%
Time:	EB	WB	EB	WB	EB	WB	EB	WB	EB	WB	EB	WB		
12-1 AM			0	2	1	1	1	0			1	1	2	0.1%
1-2 AM			0	0	2	0	2	1			1	0	2	0.1%
2-3 AM			1	0	0	1	0	0			0	0	1	0.1%
3-4 AM			0	0	0	0	0	0			0	0	0	0.0%
4-5 AM			1	1	2	0	1	1			1	1	2	0.2%
5-6 AM			3	6	3	4	4	3			3	4	8	0.7%
6-7 AM			14	9	9	9	11	13			11	10	22	1.9%
7-8 AM			45	35	59	29	49	33			51	32	83	7.1%
8-9 AM			92	38	112	43	107	37			104	39	143	12.2%
9-10 AM			42	43	44	28	39	31			42	34	76	6.5%
10-11 AM			23	37	34	29	26	23			28	30	57	4.9%
11-12 PM			22	25	35	30	28	46			28	34	62	5.3%
12-1 PM			39	34	25	35	51	40			38	36	75	6.4%
1-2 PM			35	38	35	28	31	37			34	34	68	5.8%
2-3 PM			24	41	36	44	40	55			33	47	80	6.8%
3-4 PM			63	68	40	68	50	72			51	69	120	10.3%
4-5 PM			49	64	39	73	50	68			46	68	114	9.8%
5-6 PM			43	51	38	50	42	47			41	49	90	7.7%
6-7 PM			22	36	33	48	20	40			25	41	66	5.7%
7-8 PM			13	24	16	17	16	21			15	21	36	3.0%
8-9 PM			11	14	12	15	9	11			11	13	24	2.1%
9-10 PM			9	12	5	9	9	15			8	12	20	1.7%
10-11 PM			5	5	4	10	4	9			4	8	12	1.1%
11-12 AM			2	3	4	1	5	8			4	4	8	0.7%
LANES			558	586	588	572	595	611			580	590	1170	100.0%
TOTAL			1144		1160		1206				1170			
	MON		TUE		WED		THURS		FRI		WK AVG			

PEAK HOUR					TOTAL VEHICALS-PEAK PERIODS		2 HOUR PEAK INTERVALS				
MAX. 7 - 9 am PEAK HOUR	143	⇒	12.2%	between 8-9 AM	568	⇒	6 HR TOTAL	2 HR AM (7 - 9 AM)			
MAX. 7 - 11 am PEAK HOUR	143	⇒	12.2%	between 8-9 AM	431	⇒	4 HR TOTAL	VEH / HR	VEH / 2HR	2 HR %	
								7-8 AM	83	226	19.3%
								8-9 AM	143		
MAX. 11 am - 1 pm PEAK HOUR	75	⇒	6.4%	between 12-1 PM	24 HOUR FACTORS						
MAX. 11 am - 3 pm PEAK HOUR	80	⇒	6.8%	between 2-3 PM							
MAX. 4 - 6 pm PEAK HOUR	114	⇒	9.8%	between 4-5 PM							
MAX. 3 - 6 pm PEAK HOUR	120	⇒	10.3%	between 3-4 PM	2.06	⇒	6-24 HR FACT.	2 HR NOON (11 - 1 PM)			
					2.71	⇒	4-24 HR FACT.	VEH / HR	VEH / 2HR	2 HR %	
								11-12 PM	62	137	11.7%
								12-1 PM	75		
								2 HR PM (4 - 6 PM)			
								VEH / HR	VEH / 2HR	2 HR %	
								4-5 PM	114	205	17.5%
								5-6 PM	90		

Greenridge Cres between Saanich Rd and Quadra St

Westbound

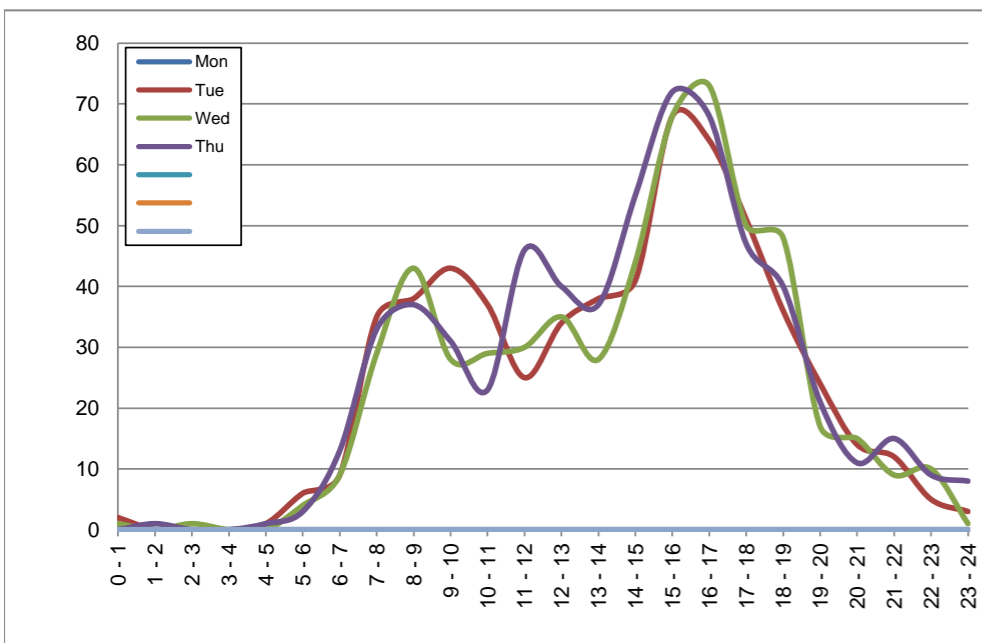
February 24, 2020 to February 27, 2020

Hourly Volumes

Time Period	Mon	Tue	Wed	Thu			
	Feb 24	Feb 25	Feb 26	Feb 27			
0 - 1		2	1	0			
1 - 2		0	0	1			
2 - 3		0	1	0			
3 - 4		0	0	0			
4 - 5		1	0	1			
5 - 6		6	4	3			
6 - 7		9	9	13			
7 - 8		35	29	33			
8 - 9		38	43	37			
9 - 10		43	28	31			
10 - 11		37	29	23			
11 - 12		25	30	46			
12 - 13		34	35	40			
13 - 14		38	28	37			
14 - 15		41	44	55			
15 - 16		68	68	72			
16 - 17		64	73	68			
17 - 18		51	50	47			
18 - 19		36	48	40			
19 - 20		24	17	21			
20 - 21		14	15	11			
21 - 22		12	9	15			
22 - 23		5	10	9			
23 - 24		3	1	8			
Day Total		586	572	611			

15-Minute Volumes

Time Start	Mon	Tue	Wed	Thu				Time Start	Mon	Tue	Wed	Thu			
	Feb 24	Feb 25	Feb 26	Feb 27					Feb 24	Feb 25	Feb 26	Feb 27			
0:00		1	0	0				12:00		7	12	9			
0:15		0	0	0				12:15		12	7	11			
0:30		1	0	0				12:30		6	9	7			
0:45		0	1	0				12:45		9	7	13			
1:00		0	0	0				13:00		13	6	12			
1:15		0	0	0				13:15		8	10	9			
1:30		0	0	0				13:30		8	5	12			
1:45		0	0	1				13:45		9	7	4			
2:00		0	0	0				14:00		11	6	12			
2:15		0	0	0				14:15		7	10	15			
2:30		0	0	0				14:30		12	16	12			
2:45		0	1	0				14:45		11	12	16			
3:00		0	0	0				15:00		19	15	13			
3:15		0	0	0				15:15		18	16	13			
3:30		0	0	0				15:30		19	15	28			
3:45		0	0	0				15:45		12	22	18			
4:00		0	0	0				16:00		14	10	17			
4:15		0	0	1				16:15		16	20	21			
4:30		0	0	0				16:30		20	27	23			
4:45		1	0	0				16:45		14	16	7			
5:00		1	0	2				17:00		14	14	16			
5:15		1	1	0				17:15		12	11	14			
5:30		1	1	0				17:30		13	6	11			
5:45		3	2	1				17:45		12	19	6			
6:00		1	1	3				18:00		14	21	13			
6:15		1	1	2				18:15		9	9	9			
6:30		5	3	4				18:30		11	13	9			
6:45		2	4	4				18:45		2	5	9			
7:00		2	4	4				19:00		12	5	6			
7:15		8	7	9				19:15		5	8	8			
7:30		13	9	5				19:30		3	3	3			
7:45		12	9	15				19:45		4	1	4			
8:00		10	13	9				20:00		4	6	4			
8:15		8	11	14				20:15		4	2	2			
8:30		10	8	6				20:30		4	4	3			
8:45		10	11	8				20:45		2	3	2			
9:00		10	4	7				21:00		5	1	4			
9:15		8	8	9				21:15		2	4	6			
9:30		11	7	11				21:30		0	1	2			
9:45		14	9	4				21:45		5	3	3			
10:00		11	5	4				22:00		4	4	2			
10:15		9	9	7				22:15		0	2	3			
10:30		12	7	9				22:30		1	2	4			
10:45		5	8	3				22:45		0	2	0			
11:00		4	7	11				23:00		1	1	4			
11:15		7	8	11				23:15		0	0	2			
11:30		8	9	7				23:30		0	0	0			
11:45		6	6	17				23:45		2	0	2			



Site notes:

Greenridge Cres between Saanich Rd and Quadra St

Eastbound

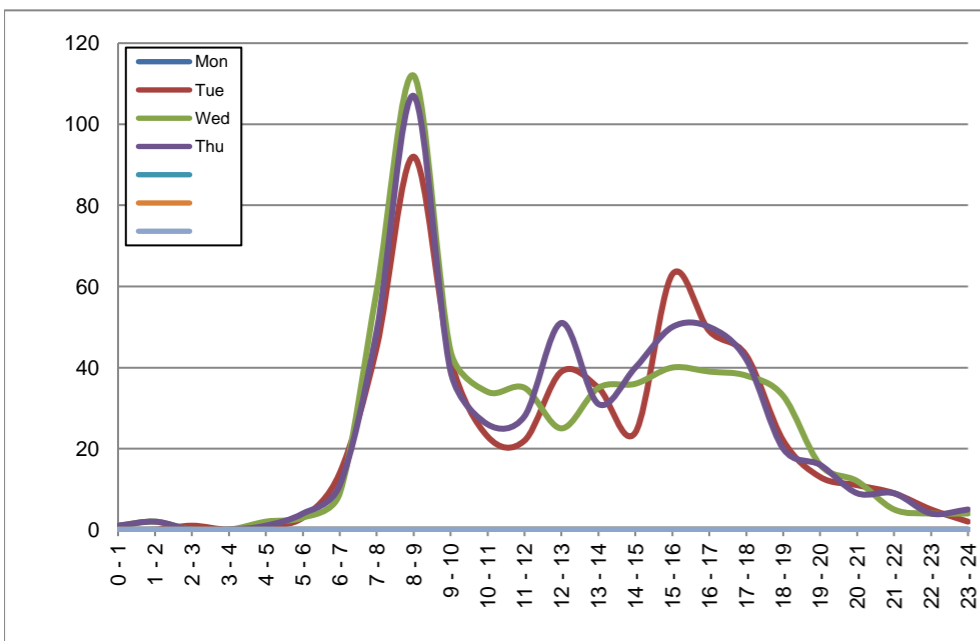
February 24, 2020 to February 27, 2020

Hourly Volumes

Time Period	Mon Feb 24	Tue Feb 25	Wed Feb 26	Thu Feb 27
0 - 1		0	1	1
1 - 2		0	2	2
2 - 3		1	0	0
3 - 4		0	0	0
4 - 5		1	2	1
5 - 6		3	3	4
6 - 7		14	9	11
7 - 8		45	59	49
8 - 9		92	112	107
9 - 10		42	44	39
10 - 11		23	34	26
11 - 12		22	35	28
12 - 13		39	25	51
13 - 14		35	35	31
14 - 15		24	36	40
15 - 16		63	40	50
16 - 17		49	39	50
17 - 18		43	38	42
18 - 19		22	33	20
19 - 20		13	16	16
20 - 21		11	12	9
21 - 22		9	5	9
22 - 23		5	4	4
23 - 24		2	4	5
Day Total		558	588	595

15-Minute Volumes

Time Start	Mon Feb 24	Tue Feb 25	Wed Feb 26	Thu Feb 27	
0:00		0	0	0	
0:15		0	0	1	
0:30		0	1	0	
0:45		0	0	0	
1:00		0	1	0	
1:15		0	0	0	
1:30		0	1	2	
1:45		0	0	0	
2:00		1	0	0	
2:15		0	0	0	
2:30		0	0	0	
2:45		0	0	0	
3:00		0	0	0	
3:15		0	0	0	
3:30		0	0	0	
3:45		0	0	0	
4:00		0	0	0	
4:15		1	0	0	
4:30		0	1	0	
4:45		0	1	1	
5:00		0	1	1	
5:15		3	2	1	
5:30		0	0	1	
5:45		0	0	1	
6:00		3	0	1	
6:15		5	3	3	
6:30		1	3	5	
6:45		5	3	2	
7:00		4	4	4	
7:15		9	12	10	
7:30		11	11	10	
7:45		21	32	25	
8:00		29	31	37	
8:15		29	32	30	
8:30		14	22	24	
8:45		20	27	16	
9:00		11	16	8	
9:15		11	9	10	
9:30		8	9	12	
9:45		12	10	9	
10:00		5	11	7	
10:15		9	9	7	
10:30		3	6	6	
10:45		6	8	6	
11:00		7	8	6	
11:15		7	7	7	
11:30		6	11	4	
11:45		2	9	11	
12:00			9	4	11
12:15			7	8	12
12:30			8	7	13
12:45			15	6	15
13:00			12	9	8
13:15			5	7	6
13:30			10	12	10
13:45			8	7	7
14:00			5	11	11
14:15			2	8	13
14:30			6	5	7
14:45			11	12	9
15:00			19	5	14
15:15			18	10	14
15:30			12	16	15
15:45			14	9	7
16:00			13	12	16
16:15			11	8	9
16:30			12	7	12
16:45			13	12	13
17:00			16	8	11
17:15			10	9	9
17:30			11	9	8
17:45			6	12	14
18:00			8	11	5
18:15			7	10	5
18:30			4	9	6
18:45			3	3	4
19:00			2	4	2
19:15			5	3	7
19:30			3	5	3
19:45			3	4	4
20:00			1	1	5
20:15			6	3	2
20:30			2	4	0
20:45			2	4	2
21:00			3	3	2
21:15			4	1	3
21:30			1	1	2
21:45			1	0	2
22:00			2	1	2
22:15			0	0	1
22:30			1	3	0
22:45			2	0	1
23:00			1	2	3
23:15			1	1	1
23:30			0	1	1
23:45			0	0	0



Site notes:

Vehicle Speed Summary

Saanich Engineering Department

Count Id: [R0473-01](#)

Filename: [Greenridge Cres between Saanich Rd and Quadra St-Feb-2020.xlsm](#)

Location: Greenridge Cres between Saanich Rd and Quadra St

Note:

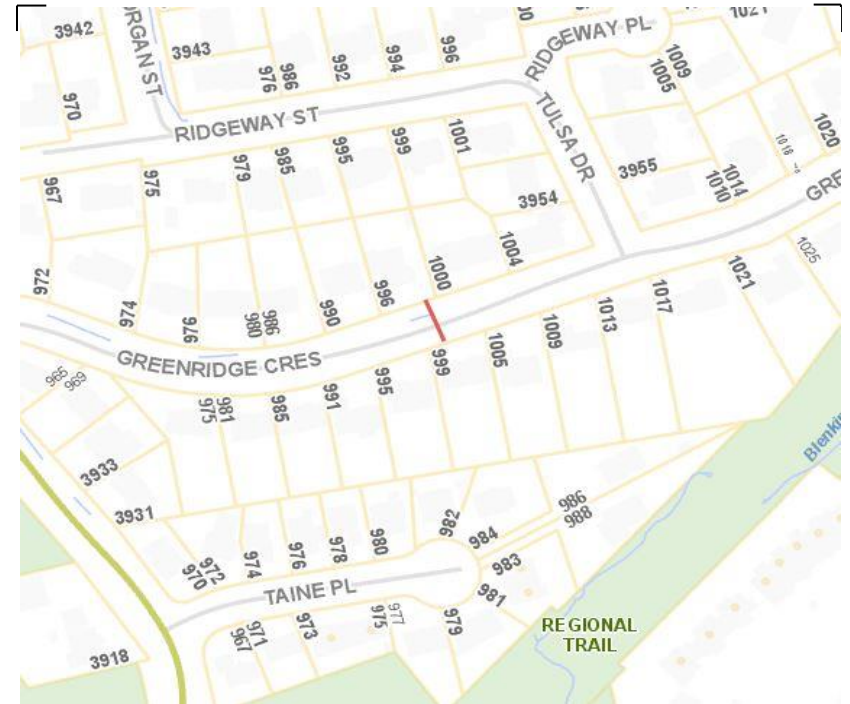
Direction: **East-West**

Dates: **February 25, 2020 To February 27, 2020**

Filtered data

AVG. SPEED	21 mph	34 km/h
50 % SPEED	21 mph	34 km/h
85 % SPEED	25 mph	41 km/h
95 % SPEED	28 mph	45 km/h

Location Map



Greenridge Cres between Saanich Rd and Quadra St

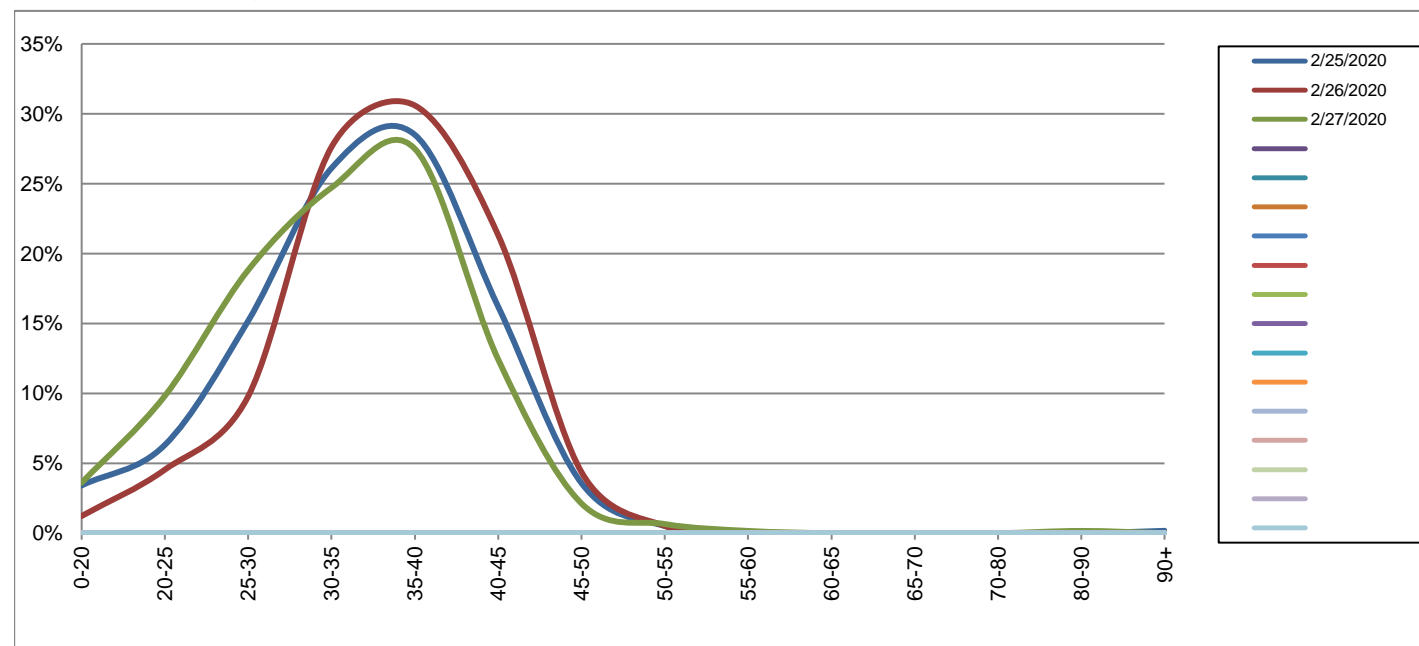
Westbound

February 25, 2020 to February 27, 2020

Daily Speed Bin Percentages															Daily Speed Bin Volumes														Total	Avg. Speed	
Bin #	1	2	3	4	5	6	7	8	9	10	11	12	13	14	1	2	3	4	5	6	7	8	9	10	11	12	13	14			
Bin Speeds	0-20	20-25	25-30	30-35	35-40	40-45	45-50	50-55	55-60	60-65	65-70	70-80	80-90	90+	0-20	20-25	25-30	30-35	35-40	40-45	45-50	50-55	55-60	60-65	65-70	70-80	80-90	90+	Volume	Speed	
2/25/2020	3.4%	6.3%	15.2%	26.1%	28.5%	16.2%	3.6%	0.5%	0.0%	0.0%	0.0%	0.0%	0.0%	0.2%	20	37	89	153	167	95	21	3	0	0	0	0	0	0	1	586	34
2/26/2020	1.2%	4.5%	9.8%	27.6%	30.6%	21.3%	4.4%	0.5%	0.0%	0.0%	0.0%	0.0%	0.0%	0.0%	7	26	56	158	175	122	25	3	0	0	0	0	0	0	0	572	36
2/27/2020	3.6%	9.8%	18.8%	24.7%	27.5%	12.4%	2.1%	0.7%	0.2%	0.0%	0.0%	0.0%	0.2%	0.0%	22	60	115	151	168	76	13	4	1	0	0	0	1	0	0	611	33
Total	2.8%	7.0%	14.7%	26.1%	28.8%	16.6%	3.3%	0.6%	0.1%	0.0%	0.0%	0.0%	0.1%	0.1%	49	123	260	462	510	293	59	10	1	0	0	0	1	1	1769	34	

Speed Data Summary

Bin #	1	2	3	4	5	6	7	8	9	10	11	12	13	14	Total
Bin Speeds	0-20	20-25	25-30	30-35	35-40	40-45	45-50	50-55	55-60	60-65	65-70	70-80	80-90	90+	1769
Survey Total	49	123	260	462	510	293	59	10	1	0	0	0	1	1	1769
% Total	2.8%	7.0%	14.7%	26.1%	28.8%	16.6%	3.3%	0.6%	0.1%	0.0%	0.0%	0.0%	0.1%	0.1%	100%
Accumulated %	2.8%	9.7%	24.4%	50.5%	79.4%	95.9%	99.3%	99.8%	99.9%	99.9%	99.9%	99.9%	99.9%	100%	
Inverse Accum. %	97.2%	90.3%	75.6%	49.5%	20.6%	4.1%	0.7%	0.2%	0.1%	0.1%	0.1%	0.1%	0.1%	0.0%	
Average Speed	34 KM/H														



Site notes:

Greenridge Cres between Saanich Rd and Quadra St

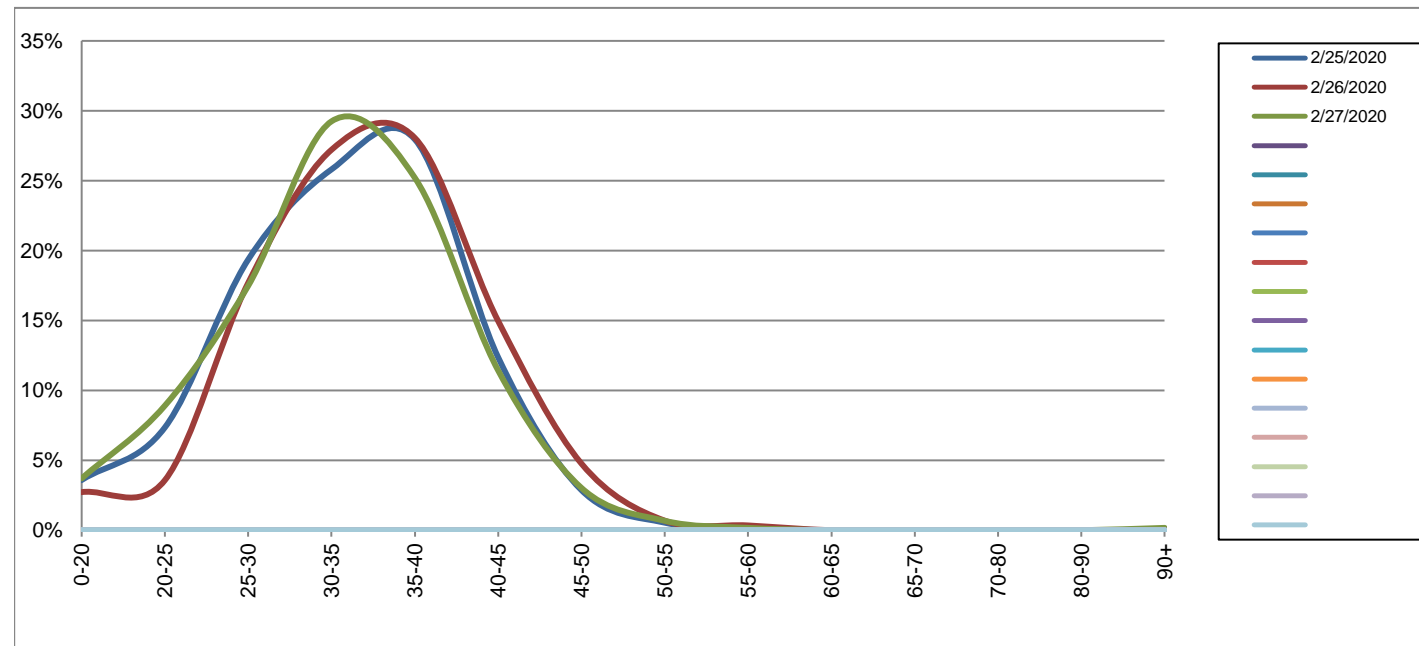
Eastbound

February 25, 2020 to February 27, 2020

Daily Speed Bin Percentages															Daily Speed Bin Volumes														Total	Avg.
Bin #	1	2	3	4	5	6	7	8	9	10	11	12	13	14	1	2	3	4	5	6	7	8	9	10	11	12	13	14	Volume	Speed
Bin Speeds	0-20	20-25	25-30	30-35	35-40	40-45	45-50	50-55	55-60	60-65	65-70	70-80	80-90	90+	0-20	20-25	25-30	30-35	35-40	40-45	45-50	50-55	55-60	60-65	65-70	70-80	80-90	90+		
2/25/2020	3.6%	7.3%	19.4%	25.8%	28.0%	12.4%	2.9%	0.5%	0.2%	0.0%	0.0%	0.0%	0.0%	0.0%	20	41	108	144	156	69	16	3	1	0	0	0	0	0	558	33
2/26/2020	2.7%	3.6%	17.7%	27.2%	28.1%	15.0%	4.8%	0.7%	0.3%	0.0%	0.0%	0.0%	0.0%	0.0%	16	21	104	160	165	88	28	4	2	0	0	0	0	0	588	34
2/27/2020	3.7%	8.9%	17.5%	29.2%	25.2%	11.4%	3.0%	0.7%	0.2%	0.0%	0.0%	0.0%	0.0%	0.2%	22	53	104	174	150	68	18	4	1	0	0	0	0	1	595	33
Total	3.3%	6.6%	18.2%	27.5%	27.1%	12.9%	3.6%	0.6%	0.2%	0.0%	0.0%	0.0%	0.0%	0.1%	58	115	316	478	471	225	62	11	4	0	0	0	0	1	1741	34

Speed Data Summary

Bin #	1	2	3	4	5	6	7	8	9	10	11	12	13	14	Total
Bin Speeds	0-20	20-25	25-30	30-35	35-40	40-45	45-50	50-55	55-60	60-65	65-70	70-80	80-90	90+	
Survey Total	58	115	316	478	471	225	62	11	4	0	0	0	0	1	1741
% Total	3.3%	6.6%	18.2%	27.5%	27.1%	12.9%	3.6%	0.6%	0.2%	0.0%	0.0%	0.0%	0.0%	0.1%	100%
Accumulated %	3.3%	9.9%	28.1%	55.5%	82.6%	95.5%	99.1%	99.7%	99.9%	99.9%	99.9%	99.9%	99.9%	100%	
Inverse Accum. %	96.7%	90.1%	71.9%	44.5%	17.4%	4.5%	0.9%	0.3%	0.1%	0.1%	0.1%	0.1%	0.1%	0.0%	
Average Speed	34 KM/H														



Site notes:

Greenridge Cres between Saanich Rd and Quadra St

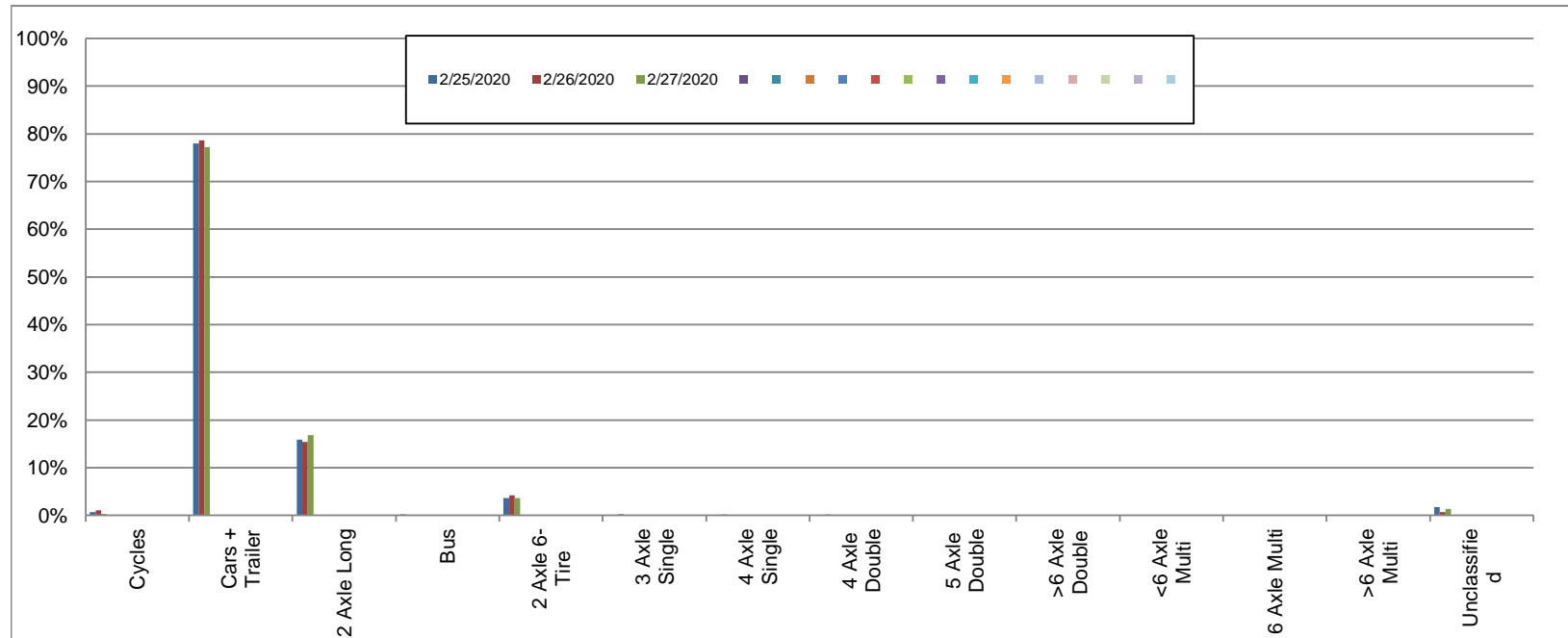
Westbound

February 25, 2020 to February 27, 2020

Daily Class Bin Percentages															Daily Class Bin Volumes											Total Volume				
Bin #	1	2	3	4	5	6	7	8	9	10	11	12	13	14	1	2	3	4	5	6	7	8	9	10	11		12	13	14	
Bin Class	Cycles	Cars + Trailer	2 Axle Long	Bus	2 Axle 6-Tire	3 Axle Single	4 Axle Single	4 Axle Double	5 Axle Double	>6 Axle Double	<6 Axle Multi	6 Axle Multi	>6 Axle Multi	Unclassified	Cycles	Cars + Trailer	2 Axle Long	Bus	2 Axle 6-Tire	3 Axle Single	4 Axle Single	4 Axle Double	5 Axle Double	>6 Axle Double	<6 Axle Multi	6 Axle Multi	>6 Axle Multi	Unclassified		
2/25/2020	0.7%	78.0%	15.9%	0.2%	3.6%	0.0%	0.0%	0.0%	0.0%	0.0%	0.0%	0.0%	0.0%	1.7%	4	457	93	1	21	0	0	0	0	0	0	0	0	0	10	586
2/26/2020	1.0%	78.7%	15.4%	0.0%	4.2%	0.0%	0.0%	0.0%	0.0%	0.0%	0.0%	0.0%	0.0%	0.7%	6	450	88	0	24	0	0	0	0	0	0	0	0	0	4	572
2/27/2020	0.3%	77.3%	16.9%	0.0%	3.6%	0.3%	0.2%	0.2%	0.0%	0.0%	0.0%	0.0%	0.0%	1.3%	2	472	103	0	22	2	1	1	1	0	0	0	0	0	8	611
Total	0.7%	78.0%	16.1%	0.1%	3.8%	0.1%	0.1%	0.1%	0.0%	0.0%	0.0%	0.0%	0.0%	1.2%	12	1379	284	1	67	2	1	1	0	0	0	0	0	22	1769	

Class Data Summary

Bin #	1	2	3	4	5	6	7	8	9	10	11	12	13	14	Total Volume
Bin Class	Cycles	Cars + Trailer	2 Axle Long	Bus	2 Axle 6-Tire	3 Axle Single	4 Axle Single	4 Axle Double	5 Axle Double	>6 Axle Double	<6 Axle Multi	6 Axle Multi	>6 Axle Multi	Unclassified	
Survey Total	12	1379	284	1	67	2	1	1	0	0	0	0	0	22	1769
% Total	0.7%	78.0%	16.1%	0.1%	3.8%	0.1%	0.1%	0.1%	0.0%	0.0%	0.0%	0.0%	0.0%	1.2%	100%
Accumulated %	0.7%	78.6%	94.7%	94.7%	98.5%	98.6%	98.7%	98.8%	98.8%	98.8%	98.8%	98.8%	98.8%	100.0%	
Inv. Accum. %	99.3%	21.4%	5.3%	5.3%	1.5%	1.4%	1.3%	1.2%	1.2%	1.2%	1.2%	1.2%	1.2%	0.0%	



Classification Descriptions

Bin #	Bin Description
1	Motorcycles
2	Passenger cars, including those with recreational trailers
3	2-axle pick-ups, vans, and RVs, including those with recreational trailers
4	Buses
5	2-axle, 6-tire single units
6	3-axle single units
7	4-axle single units
8	3-axle or 4-axle double unit
9	5-axle double unit
10	6-, 7-, or 8-axle double unit
11	5-axle multiple unit
12	6-axle multiple unit
13	7-or-more-axle multiple unit
14	Vehicles that could not be classified

Site notes:

Greenridge Cres between Saanich Rd and Quadra St

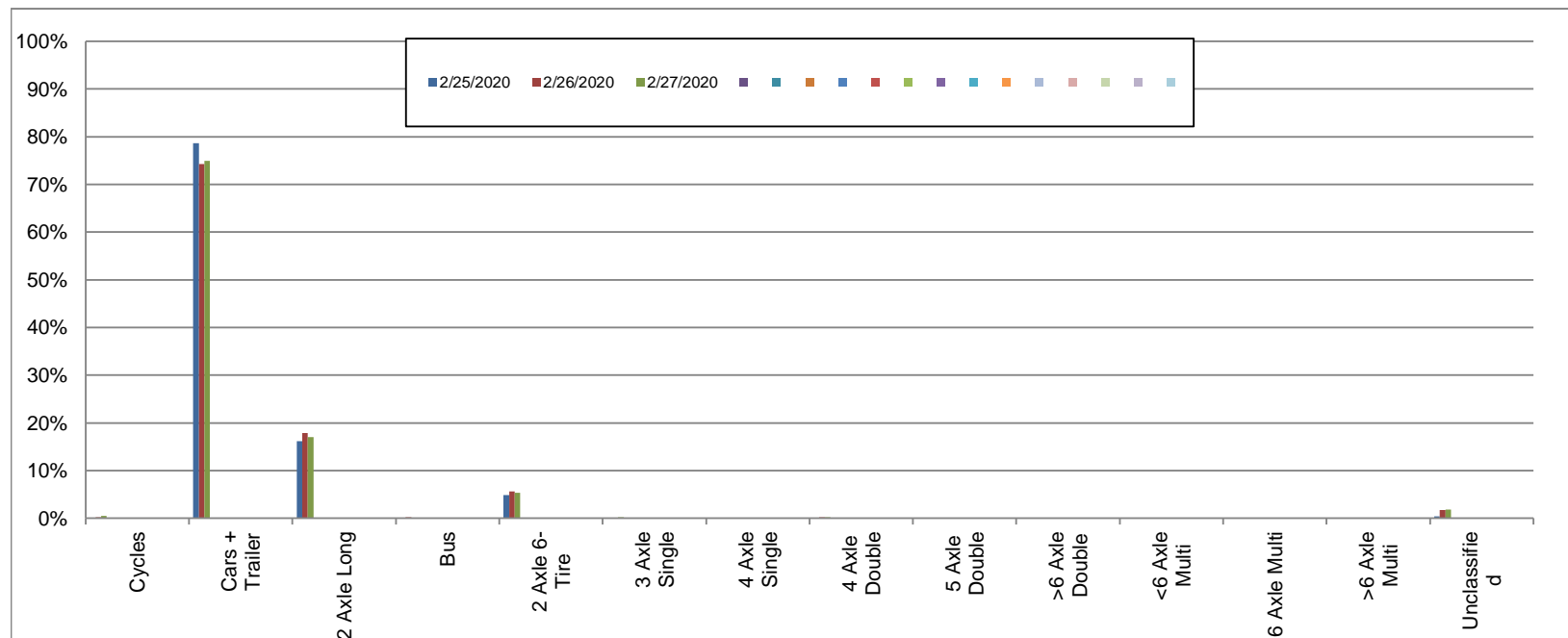
Eastbound

February 25, 2020 to February 27, 2020

Daily Class Bin Percentages															Daily Class Bin Volumes															
Bin #	1	2	3	4	5	6	7	8	9	10	11	12	13	14	1	2	3	4	5	6	7	8	9	10	11	12	13	14	Total Volume	
Bin Class	Cycles	Cars + Trailer	2 Axle Long	Bus	2 Axle 6-Tire	3 Axle Single	4 Axle Single	4 Axle Double	5 Axle Double	>6 Axle Double	<6 Axle Multi	6 Axle Multi	>6 Axle Multi	Unclassified	Cycles	Cars + Trailer	2 Axle Long	Bus	2 Axle 6-Tire	3 Axle Single	4 Axle Single	4 Axle Double	5 Axle Double	>6 Axle Double	<6 Axle Multi	6 Axle Multi	>6 Axle Multi	Unclassified	Total Volume	
2/25/2020	0.0%	78.7%	16.1%	0.0%	4.8%	0.0%	0.0%	0.0%	0.0%	0.0%	0.0%	0.0%	0.0%	0.4%	0	439	90	0	27	0	0	0	0	0	0	0	0	0	2	558
2/26/2020	0.2%	74.3%	17.9%	0.2%	5.6%	0.0%	0.0%	0.2%	0.0%	0.0%	0.0%	0.0%	0.0%	1.7%	1	437	105	1	33	0	0	1	0	0	0	0	0	0	10	588
2/27/2020	0.5%	75.0%	17.0%	0.0%	5.4%	0.2%	0.0%	0.2%	0.0%	0.0%	0.0%	0.0%	0.0%	1.8%	3	446	101	0	32	1	0	1	0	0	0	0	0	0	11	595
Total	0.2%	75.9%	17.0%	0.1%	5.3%	0.1%	0.0%	0.1%	0.0%	0.0%	0.0%	0.0%	0.0%	1.3%	4	1322	296	1	92	1	0	2	0	0	0	0	0	23	1741	

Class Data Summary

Bin #	1	2	3	4	5	6	7	8	9	10	11	12	13	14	Total Volume
Bin Class	Cycles	Cars + Trailer	2 Axle Long	Bus	2 Axle 6-Tire	3 Axle Single	4 Axle Single	4 Axle Double	5 Axle Double	>6 Axle Double	<6 Axle Multi	6 Axle Multi	>6 Axle Multi	Unclassified	Total Volume
Survey Total	4	1322	296	1	92	1	0	2	0	0	0	0	0	23	1741
% Total	0.2%	75.9%	17.0%	0.1%	5.3%	0.1%	0.0%	0.1%	0.0%	0.0%	0.0%	0.0%	0.0%	1.3%	100%
Accumulated %	0.2%	76.2%	93.2%	93.2%	98.5%	98.6%	98.6%	98.7%	98.7%	98.7%	98.7%	98.7%	98.7%	100.0%	
Inv. Accum. %	99.8%	23.8%	6.8%	6.8%	1.5%	1.4%	1.4%	1.3%	1.3%	1.3%	1.3%	1.3%	1.3%	0.0%	



Classification Descriptions

Bin #	Bin Description
1	Motorcycles
2	Passenger cars, including those with recreational trailers
3	2-axle pick-ups, vans, and RVs, including those with recreational trailers
4	Buses
5	2-axle, 6-tire single units
6	3-axle single units
7	4-axle single units
8	3-axle or 4-axle double unit
9	5-axle double unit
10	6-, 7-, or 8-axle double unit
11	5-axle multiple unit
12	6-axle multiple unit
13	7-or-more-axle multiple unit
14	Vehicles that could not be classified

Site notes: